



Solid State Drives

SG2 Series

Product Brief

株式会社 **東芝**

TOSHIBA CORPORATION

1. SCOPE

This document describes the specifications of the following model.

1.1 2.5inch Case Type

Product Number	Capacity
THNSxB030GBSJ	30 GB
THNSxB062GBSJ	62 GB

1.2 Half Slim Type

Product Number	Capacity
THNSxB030GMSJ	30 GB
THNSxB062GMSJ	62 GB

1.3 mSATA Type

Product Number	Capacity
THNSxB030GMCJ	30 GB
THNSxB062GMCJ	62 GB

2. GENERAL DESCRIPTION

The drive features an ATA-8 and Serial ATA revision 2.6 interface embedded controller that requires a simplified adapter board for interfacing to a Serial ATA or Serial ATA compatible bus. The drive is distinctive for its small and light body .

The drive has no mechanical moving parts.

The drive is a memory storage device using NAND Flash Memories with high performance and reliability.

3. KEY FEATURES

- High capacity in smallest size
 - ✧ Accommodating formatted capacity of 30/62 GB.
 - ✧ Slim and light design.
- Fast access and fast transfer rate
 - ✧ Interface speed up to 3 gigabits per second and maximum memory transfer 180 megabytes per second in read, 50 megabytes per second in write.
 - ✧ Read cache and write cache enhancing system throughput.
- Intelligent Interface
 - ✧ ATA-8 ACS2 and Serial ATA revision 2.6 interface specifications supported.
 - ✧ Translation mode which enables any drive configuration.
 - ✧ Support 28 bit LBA (Logical Block Address) mode commands and 48 bit LBA mode commands.
 - ✧ Multi word DMA, Ultra-DMA modes and Advanced PIO mode settings / commands supported.
 - ✧ Data Set Management command set supported.
- Data integrity
 - ✧ Automatic retries and corrections for read errors.
 - ✧ The drive has a capability of FDE(Full Disk Encryption) function. (Optional)
Note: Standard model isolates FDE circuit.
- High reliability
 - ✧ Shock (operating/non-operating) up to 1500G.
- Low power consumption
 - ✧ Low power consumption by Adaptive Power Mode.
 - ✧ Low power consumption by Serial ATA Device Initiated Power Management.

4. BASIC SPECIFICATION

Product Number	THNSNB030GBSJ THNSNB030GMSJ THNSNB030GMCJ	THNSNB062GBSJ THNSNB062GMSJ THNSNB062GMCJ
Formatted Capacity (gigabytes)	30	62
Total Number of User Addressable Sectors in LBA Mode	58,626,288	121,138,416

5. PERFORMANCE

Host Transfer rate	300 Mbytes / sec
Maximum Data Read	180 Mbytes / sec
Maximum Data Write	50 Mbytes / sec

6. POWER REQUIREMENTS

6.1 Supply Voltage

6.1.1 2.5inch Case Type & Half Slim Type

Allowable voltage	5.0V \pm 5%
Allowable noise/ripple	100 mV p-p or less
Allowable supply rise time	2 –100 msec

Note) Recommended host supplying capability for the drive is 1.5 A .

Note) The drive has over current protect circuit. (Rated current: 3.15A)

6.1.2 mSATA Type

Allowable voltage	3.3V \pm 5%
Allowable noise/ripple	100 mV p-p or less
Allowable supply rise time	2 –100 msec

Note) Recommended host supplying capability for the drive is 1.5 A .

Note) The drive has over current protect circuit. (Rated current: 3.15A)

6.2 Power Consumption

6.2.1 2.5inch Case Type & Half Slim Type

Operation (@25°C)	THNSNB030GBSJ THNSNB030GMSJ (30 GB)	THNSNB062GBSJ THNSNB062GMSJ (62 GB)
Read	1.4W Typ.	1.5W Typ.
Write	1.7W Typ.	1.8W Typ.
Idle (note 1)	55mW Typ.	55mW Typ.
Standby (note 2)	55mW Typ.	55mW Typ.
Sleep (note 2)	55mW Typ.	55mW Typ.

6.2.2 mSATA Type

Operation (@25°C)	THNSNB030GMCJ (30 GB)	THNSNB062GMCJ (62 GB)
Read (note 3)	1.3W Typ	1.4W Typ
Write (note 3)	1.6W Typ	1.7W Typ
Idle (note 1)	55mW Typ.	55mW Typ.
Standby (note 2)	55mW Typ.	55mW Typ.
Sleep (note 2)	55mW Typ.	55mW Typ.

(note1) The values are based on using S-ATA power management features. The Slumber mode is used for the idle mode power consumption measurements. And this mode may execute background write operation then the drive power consumption temporally changes to write power.

(note 2) The values are based on using S-ATA power management features. The Slumber mode is used for Standby and Sleep modes power consumption measurements.

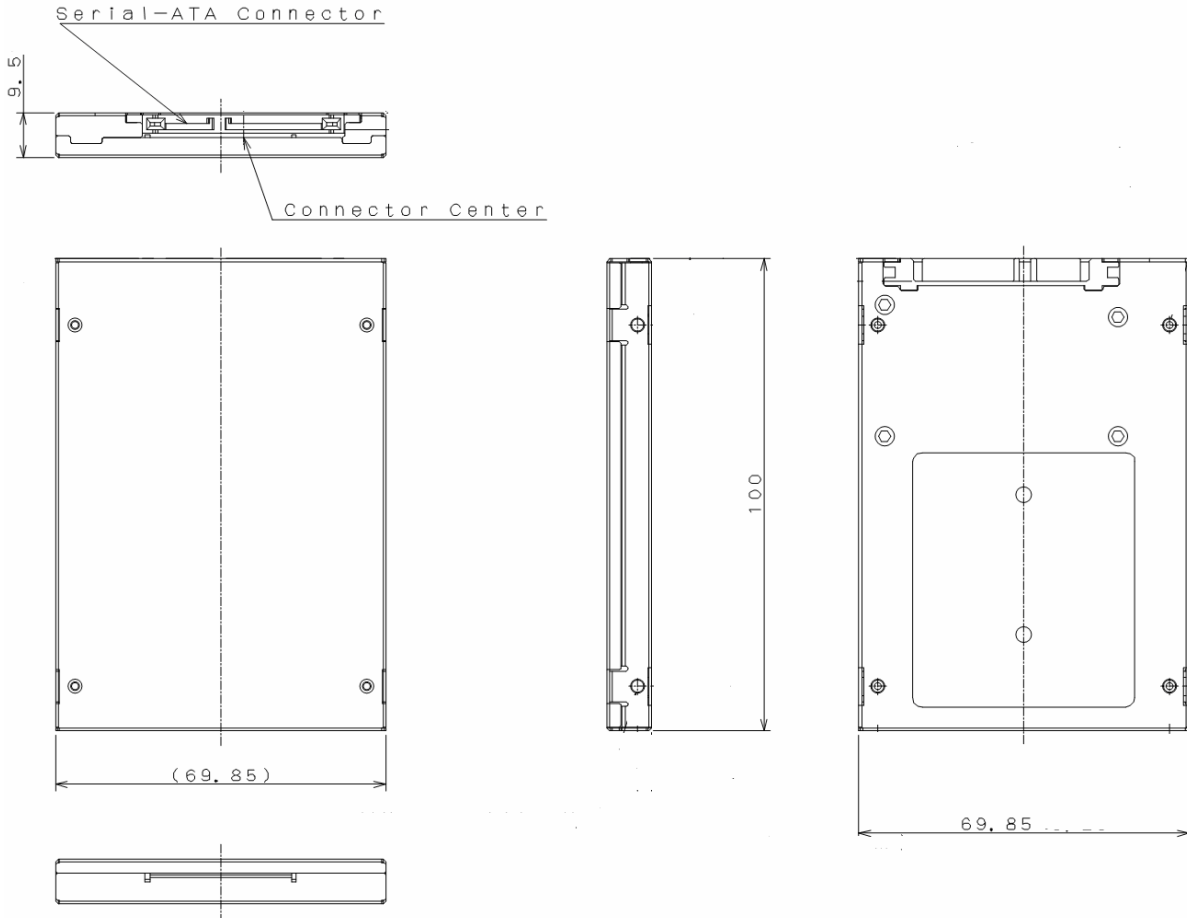
(note 3) The Read/Write current is depend on data transfer rate. This chart shows Read 220MB/s and Write 180MB/s cases.

7. MECHANICAL SPECIFICATIONS

7.1 2.5inch Case Type

7.1.1 Dimension

Width	69.85 mm
Height	9.5 mm
Length	100.0 mm



7.1.2 Weight

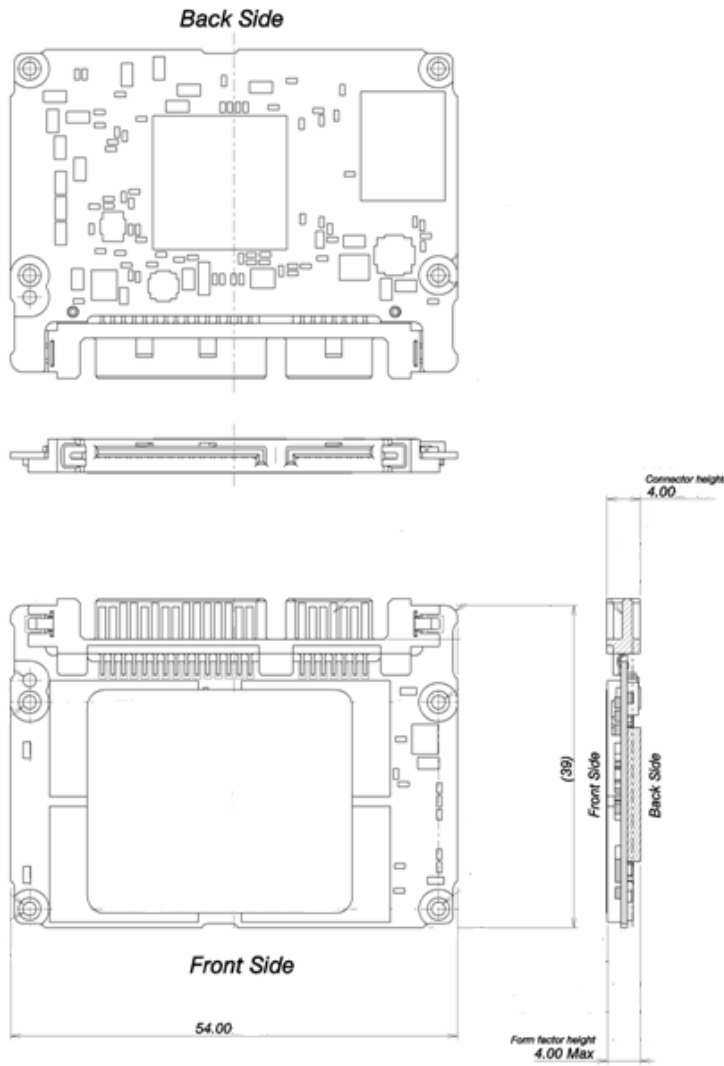
Weight
36 gram (typ.)

nit: mm

7.2 Half Slim Type

7.2.1 Dimension

Width	54 mm
Height	4 mm
Length	39 mm



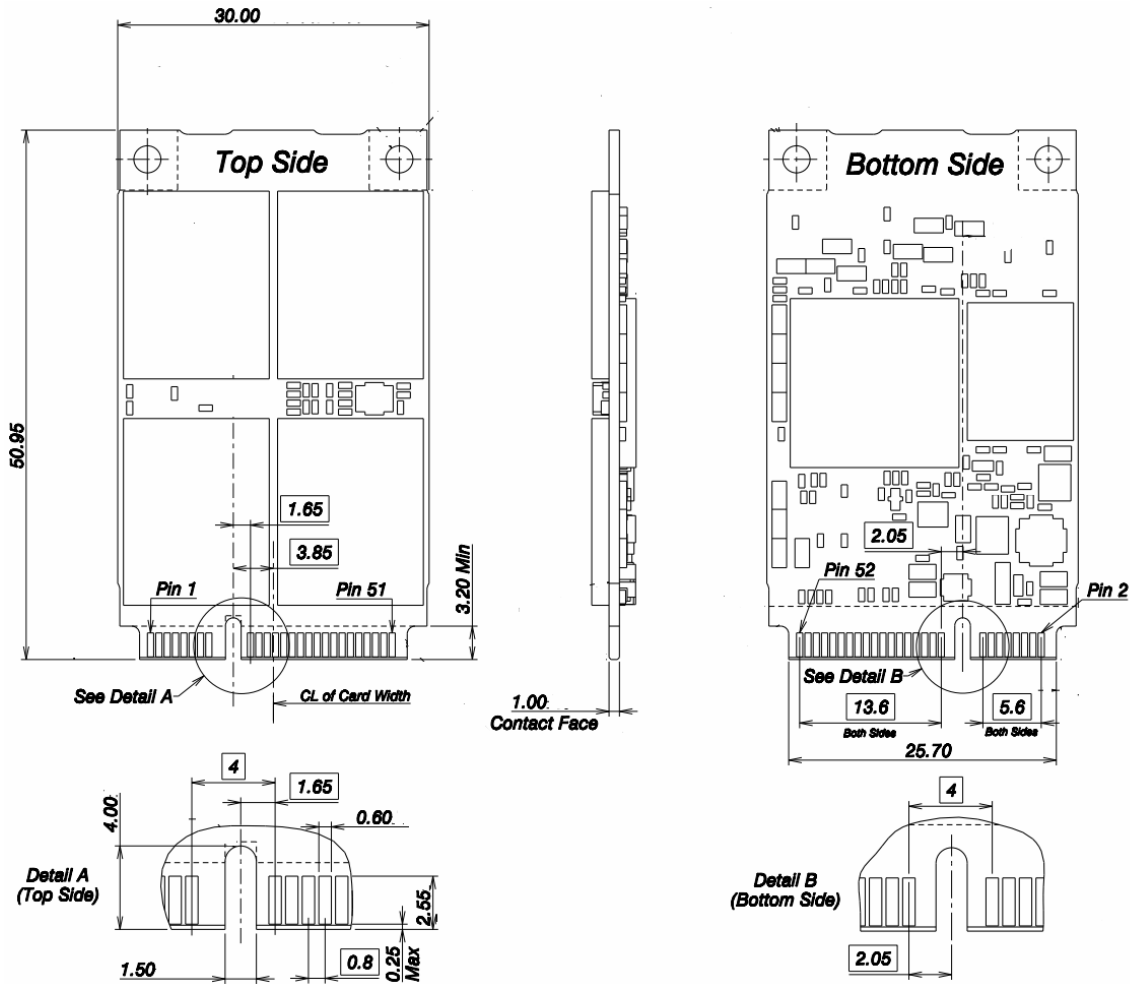
7.2.2 Weight

Weight
9 gram (typ.)

7.3 mSATA Type

7.3.1 Dimension

Width	30 mm
Height	4.75 mm
Length	50.95 mm



7.3.2 Weight

Weight
9 gram (typ.)

8. ENVIRONMENTAL LIMITS

8.1 Temperature and Humidity

8.1.1 Temperature

Operating	0°C (Tc) - 70°C (Tc) Gradient 30°C (Ta) / Hour maximum
Non- operating	- 40°C- 85°C Gradient 30°C / Hour maximum
Under shipment	- 40°C- 85°C Gradient 30°C / Hour maximum (Packed in Toshiba's original shipping package)

Note: Ta: Ambient Temperature, Tc: Temperature of all components

8.1.2 Humidity

Operating	8% - 90% R.H. (No condensation)
Non- operating	8% - 95% R.H. (No condensation)
Under shipment	5% - 95% R.H. (Packed in Toshiba's original shipping package)

8.2 Vibration

Operating	20G Peak, 10~2,000Hz, (20min /Axis)x3 Axis
Non operating	20G Peak, 10~2,000Hz, (12Cycle /Axis)x3 Axis, x20min.

8.3 Shock

Operating	[1500G] 0.5 msec half sine wave
Non-operating	
Under shipment	100 cm free drop Apply shocks in each direction of the drive's three mutually perpendicular axes, one axis at a time. (Packed in Toshiba's original shipping package)

9. RESTRICTIONS ON PRODUCT USE

- Toshiba Corporation, and its subsidiaries and affiliates (collectively "TOSHIBA"), reserve the right to make changes to the information in this document, and related hardware, software and systems (collectively "Product") without notice.
- This document and any information herein may not be reproduced without prior written permission from TOSHIBA. Even with TOSHIBA's written permission, reproduction is permissible only if reproduction is without alteration/omission.
- Though TOSHIBA works continually to improve Product's quality and reliability, Product can malfunction or fail. Customers are responsible for complying with safety standards and for providing adequate designs and safeguards for their hardware, software and systems which minimize risk and avoid situations in which a malfunction or failure of Product could cause loss of human life, bodily injury or damage to property, including data loss or corruption. Before creating and producing designs and using, customers must also refer to and comply with (a) the latest versions of all relevant TOSHIBA information, including without limitation, this document, the specifications, the data sheets and application notes for Product and the precautions and conditions set forth in the "TOSHIBA Semiconductor Reliability Handbook" and (b) the instructions for the application that Product will be used with or for. Customers are solely responsible for all aspects of their own product design or applications, including but not limited to (a) determining the appropriateness of the use of this Product in such design or applications; (b) evaluating and determining the applicability of any information contained in this document, or in charts, diagrams, programs, algorithms, sample application circuits, or any other referenced documents; and (c) validating all operating parameters for such designs and applications. **TOSHIBA ASSUMES NO LIABILITY FOR CUSTOMERS' PRODUCT DESIGN OR APPLICATIONS.**
- Product is intended for use in general electronics applications (e.g., computers, personal equipment, office equipment, measuring equipment, industrial robots and home electronics appliances) or for specific applications as expressly stated in this document. Product is neither intended nor warranted for use in equipment or systems that require extraordinarily high levels of quality and/or reliability and/or a malfunction or failure of which may cause loss of human life, bodily injury, serious property damage or serious public impact ("Unintended Use"). Unintended Use includes, without limitation, equipment used in nuclear facilities, equipment used in the aerospace industry, medical equipment, equipment used for automobiles, trains, ships and other transportation, traffic signaling equipment, equipment used to control combustions or explosions, safety devices, elevators and escalators, devices related to electric power, and equipment used in finance-related fields. Do not use Product for Unintended Use unless specifically permitted in this document.
- Do not disassemble, analyze, reverse-engineer, alter, modify, translate or copy Product, whether in whole or in part.
- Product shall not be used for or incorporated into any products or systems whose manufacture, use, or sale is prohibited under any applicable laws or regulations.
- The information contained herein is presented only as guidance for Product use. No responsibility is assumed by TOSHIBA for any infringement of patents or any other intellectual property rights of third parties that may result from the use of Product. No license to any intellectual property right is granted by this document, whether express or implied, by estoppel or otherwise.
- **ABSENT A WRITTEN SIGNED AGREEMENT, EXCEPT AS PROVIDED IN THE RELEVANT TERMS AND CONDITIONS OF SALE FOR PRODUCT, AND TO THE MAXIMUM EXTENT ALLOWABLE BY LAW, TOSHIBA (1) ASSUMES NO LIABILITY WHATSOEVER, INCLUDING WITHOUT LIMITATION, INDIRECT, CONSEQUENTIAL, SPECIAL, OR INCIDENTAL DAMAGES OR LOSS, INCLUDING WITHOUT LIMITATION, LOSS OF PROFITS, LOSS OF OPPORTUNITIES, BUSINESS INTERRUPTION AND LOSS OF DATA, AND (2) DISCLAIMS ANY AND ALL EXPRESS OR IMPLIED WARRANTIES AND CONDITIONS RELATED TO SALE, USE OF PRODUCT, OR INFORMATION, INCLUDING WARRANTIES OR CONDITIONS OF MERCHANTABILITY, FITNESS FOR A PARTICULAR PURPOSE, ACCURACY OF INFORMATION, OR NONINFRINGEMENT.**
- Do not use or otherwise make available Product or related software or technology for any military purposes, including without limitation, for the design, development, use, stockpiling or manufacturing of nuclear, chemical, or biological weapons or missile technology products (mass destruction weapons). Product and related software and technology may be controlled under the Japanese Foreign Exchange and Foreign Trade Law and the U.S. Export Administration Regulations. Export and re-export of Product or related software or technology are strictly prohibited except in compliance with all applicable export laws and regulations.
- Product is subject to foreign exchange and foreign trade control laws.
- Please contact your TOSHIBA sales representative for details as to environmental matters such as the RoHS compatibility of Product. Please use Product in compliance with all applicable laws and regulations that regulate the inclusion or use of controlled substances, including without limitation, the EU RoHS Directive. TOSHIBA assumes no liability for damages or losses occurring as a result of noncompliance with applicable laws and regulations.