

128 PROGRAMS AND MULTISAMPLES
FOR KORG KRONOS

HD-1



WWW.SOUNDSOFPLANET.COM

WWW.SOUNDSOFPLANET.COM

© 2012-2013 by SOP - All Rights Reserved
This document is protected by EU copyright and
other intellectual property laws and may not be reproduced,
rewritten, distributed, re-disseminated, transmitted, displayed,
published or broadcast, directly or indirectly, in any medium
without the prior written permission of SoP.
Revision Date – 05-12-2013

Sounds of Planet would like to thank you for purchase of sound set called Earth for Kronos or Kronos X .

Earth includes 128 new programs with stereo and mono Multisamples. Applied sampling technology allowed to obtain new excellent patches, which in combination with Kronos' HD-1 engine sound really superbly and very inspiring. 128 programs from Earth set provide the sounds in such musical categories as: – MotionSynth, SlowSynth, Vocal, FastSynth, Bass, Short Decay, Guitar, Lead, Woodwind, Bells, Piano. Controllers programmed to each patch (joystick, 2 switches over joystick, ribbon and Vector Joystick) have significant impact on sound of all 128 programs. New set is an effect of a dozen or so months of work with samples and Kronos programming. These new sounds will be very useful in various musical genres, but first of all will allow you to enter a new sound space. Earth – a sound set really necessary to get the best out of your favourite Korg machine.

Make a copy of all own files in the instrument performing SAVE ALL function- see manual KRONOS_Quick_Starts or KRONOS_Param_Guide.

Sounds of Planet Company – shall bear no liability for any damages resulted in connection with incorrect use of program and/or in effect of incorrect installation of program.

How to install the sound set Earth ?

Unzipped file named Earth by SoP.zip , which includes the following files:

1. Earth (folder)
2. Earth .KSC
3. Earth _UserBank.KSC
4. Earth .PCG
5. MANUAL Earth (folder)

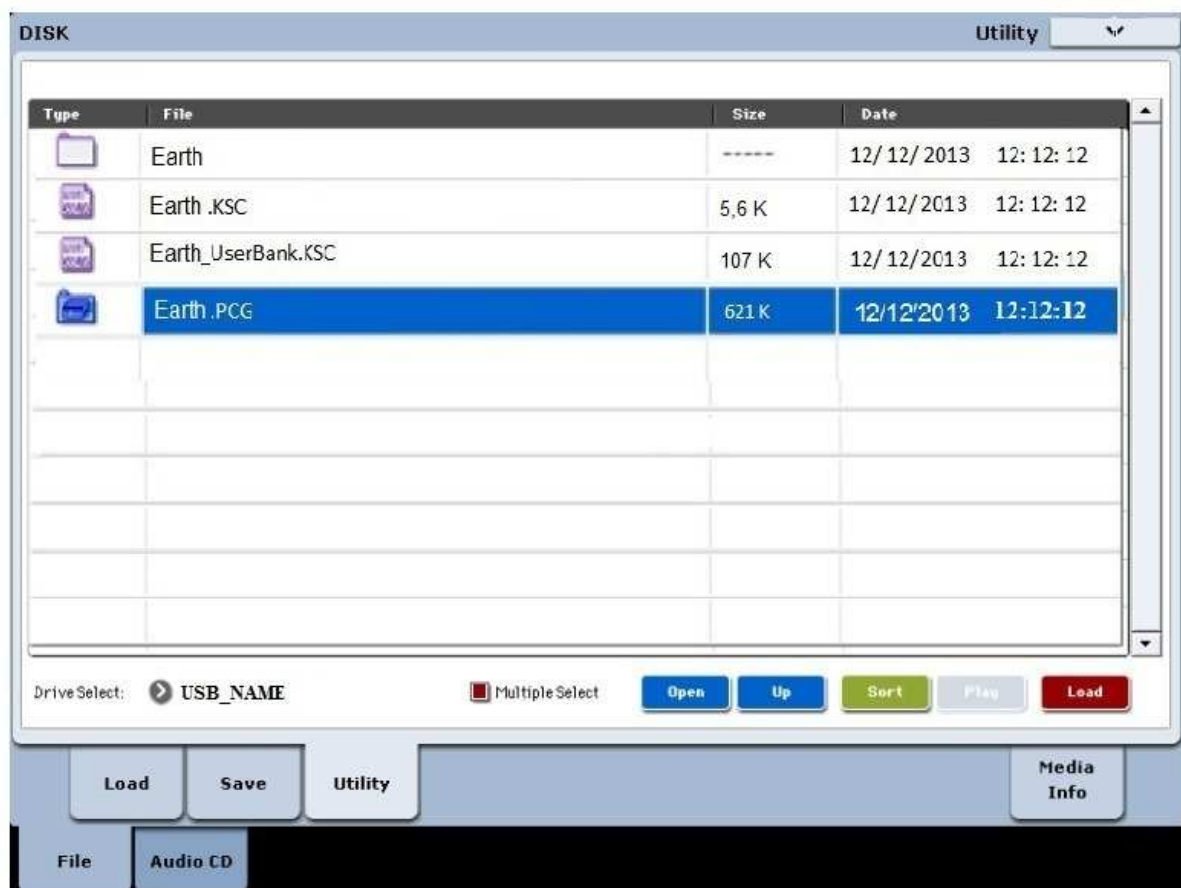
should be copied to external USB memory stick except for PDF file MANUAL_Earth

Once you have copied the whole set, press the Load tab on lower part of the screen and find your new location of Earth files.

Connect the USB stick to Kronos, wait a few second.

Then enter the Disc mode and select your USB drive.

Copy all four files to the internal drive of your Kronos to location as selected by you. You can do it in the way as presented on the drawing below:

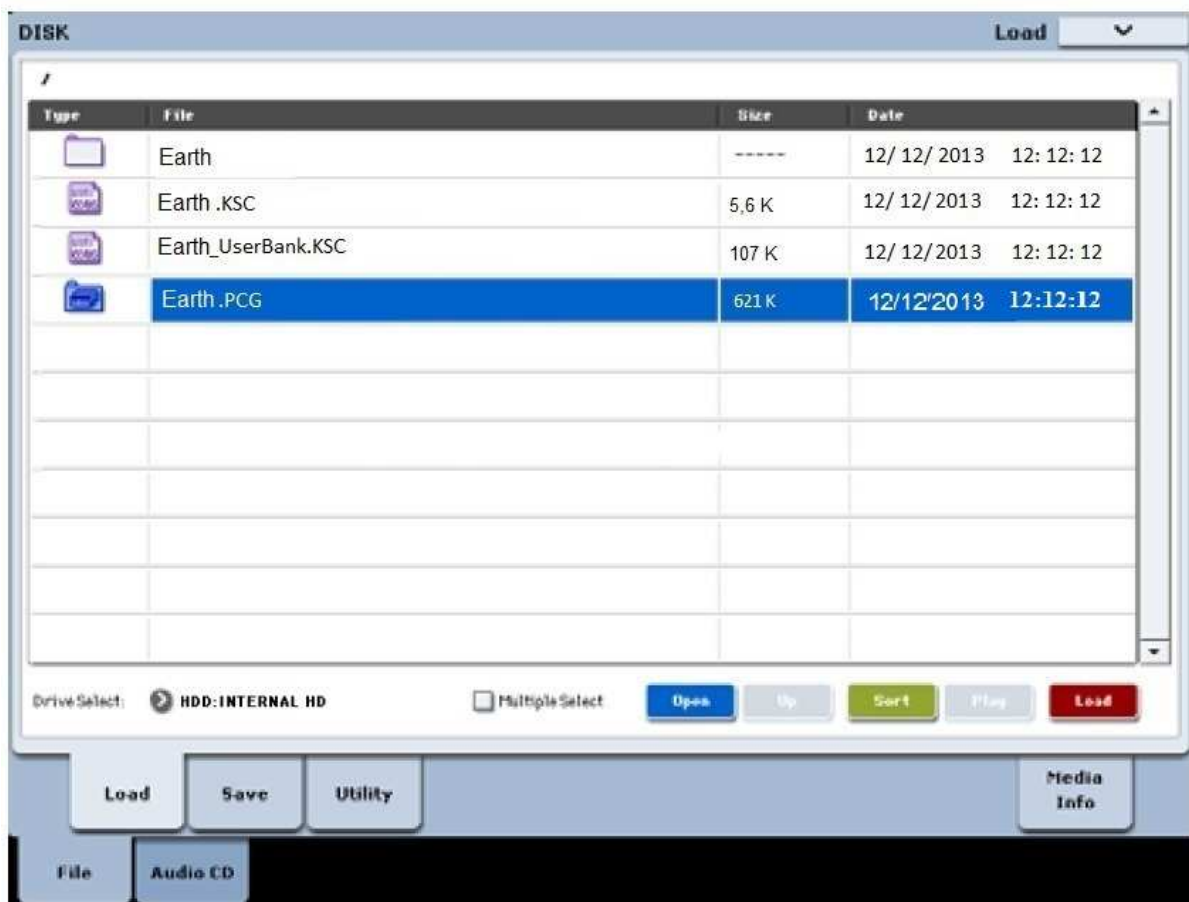


1. In the Disc mode – press lower tab Utility
2. Highlight the file Earth.PCG
3. Put the marker in lower part marking Multiple Select square
4. Now highlight the remaining files.
5. Now select Utility in right upper corner of strip

6. After the list drop down, select COPY option
7. In lower section, you can now select new final location on internal drive of Kronos.
8. Press Paste - and wait until all files are copied.

Once you have copied the whole set, press the Load tab on lower part of the screen and find your new location of Earth files.

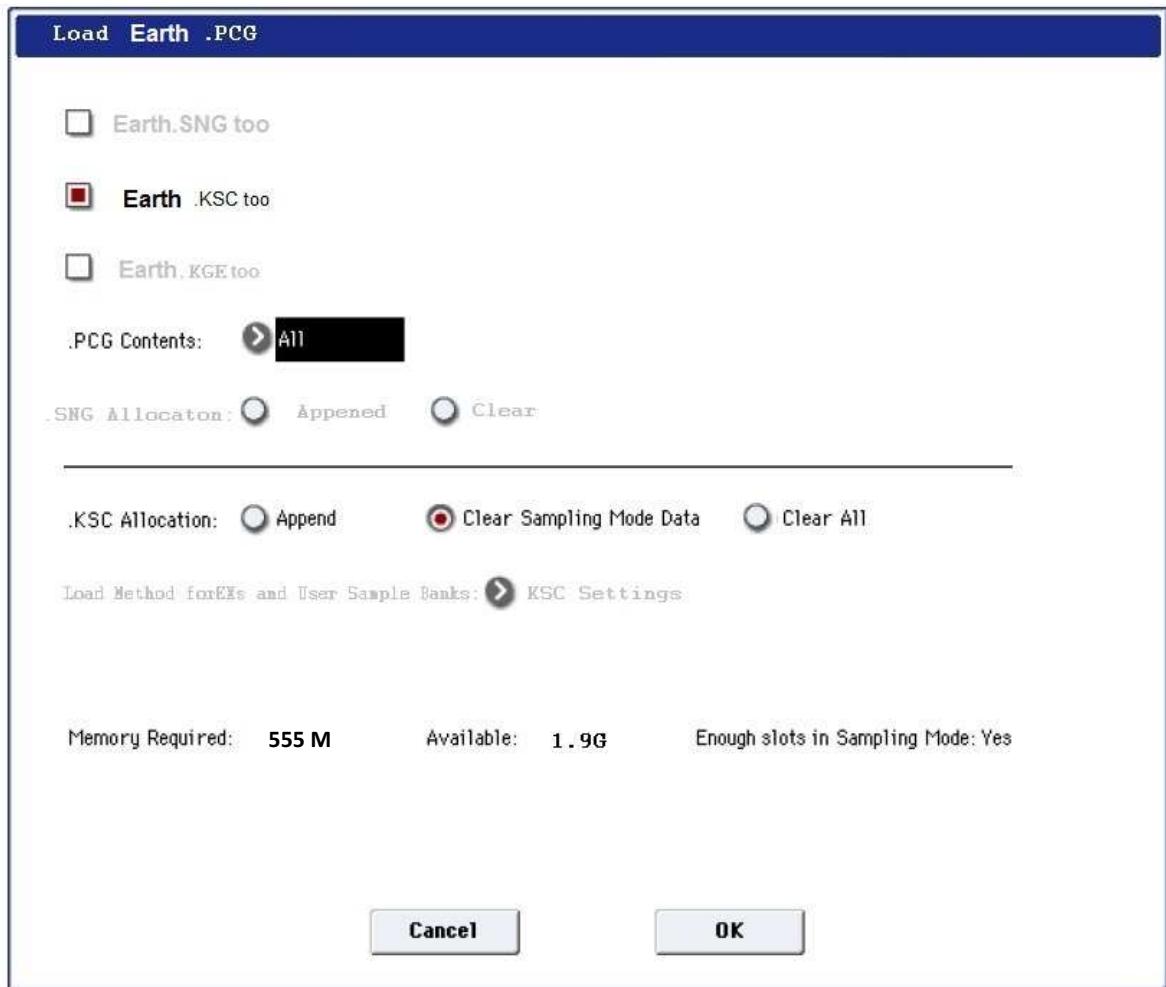
You should see the following window :



Installation procedure for instruments with RAM memory more than 1 GB

Highlight the file named Earth.PCG as shown on the illustration and press red Load button in right lower corner.

The following dialog window will appear :



Mark the Load Earth.KSC too option and Clear Sampling Mode Data option in the middle of window screen – according to the picture.

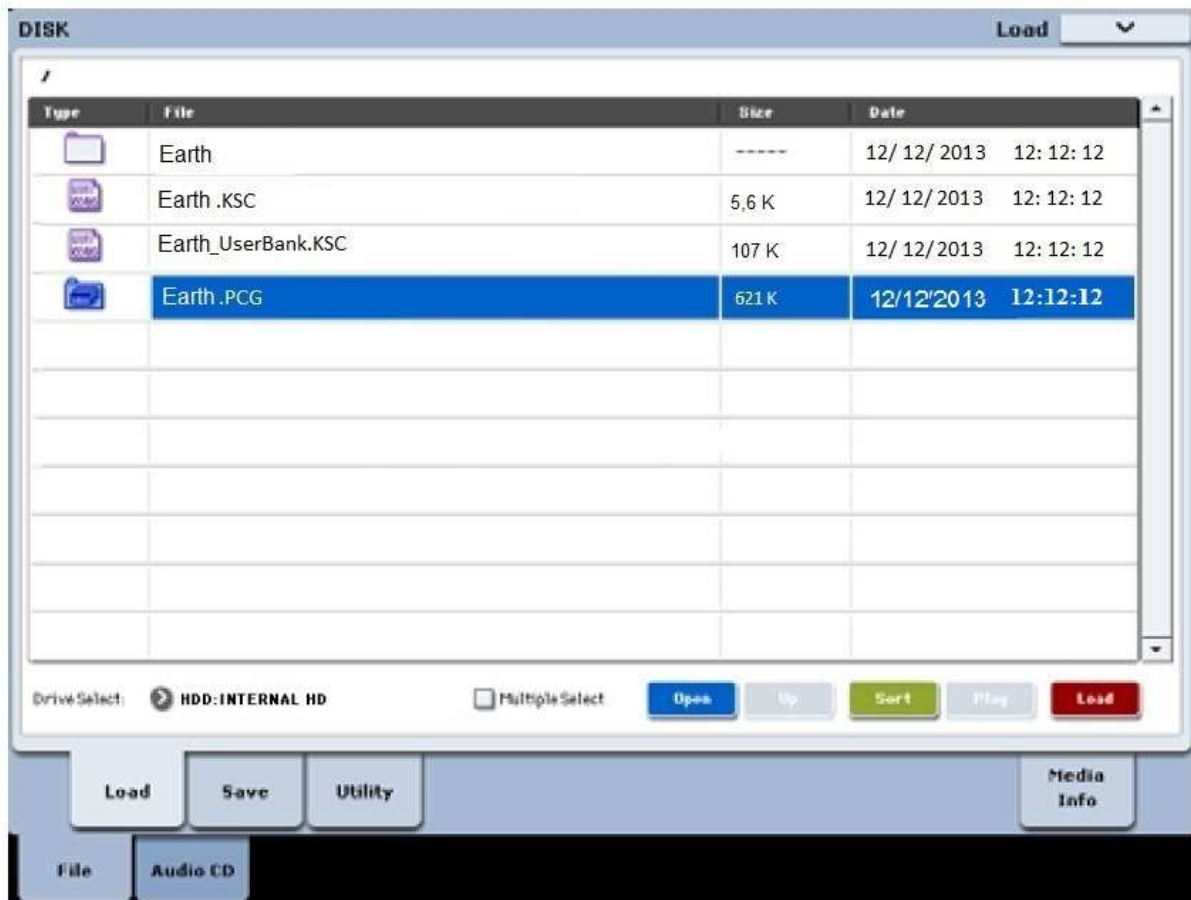
The programs of Earth set – by default will be loaded to Bank U-BB.

But in that dialog window, in its middle section, you can still change the default location from Bank U-BB to other location. To do so, use “.PCG Contents” and select other location.

Press ok

Now go to program mode and select the bank with your new Earth patches.

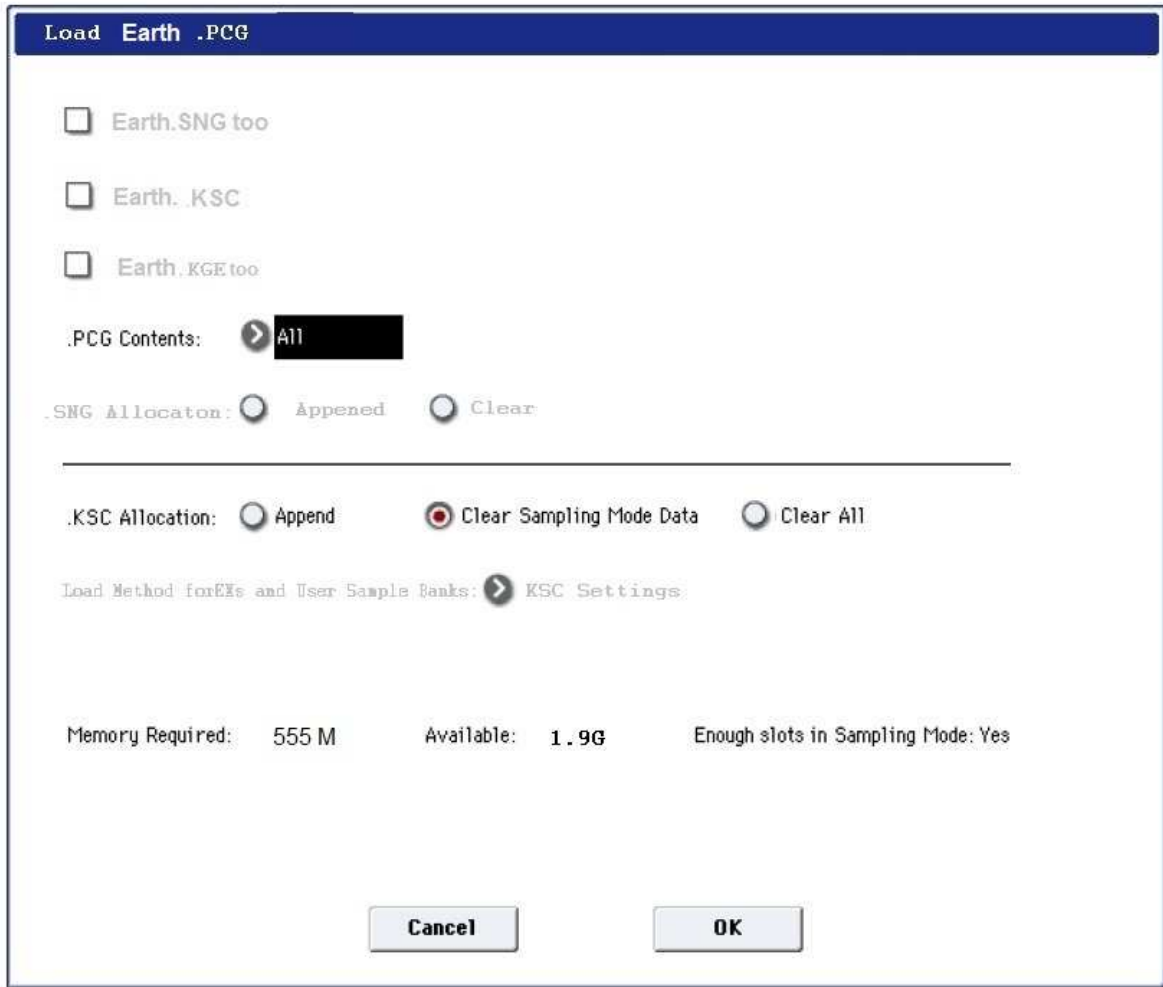
Installation procedure of Earth set – for Kronos machines with 1 GB RAM



Install Earth . PCG – highlighting its name in the window as shown on the picture above. Press red Load button on the bottom right section of dialogue window .

Repeat the same procedure but this time for the file Earth _UserBank.KSC

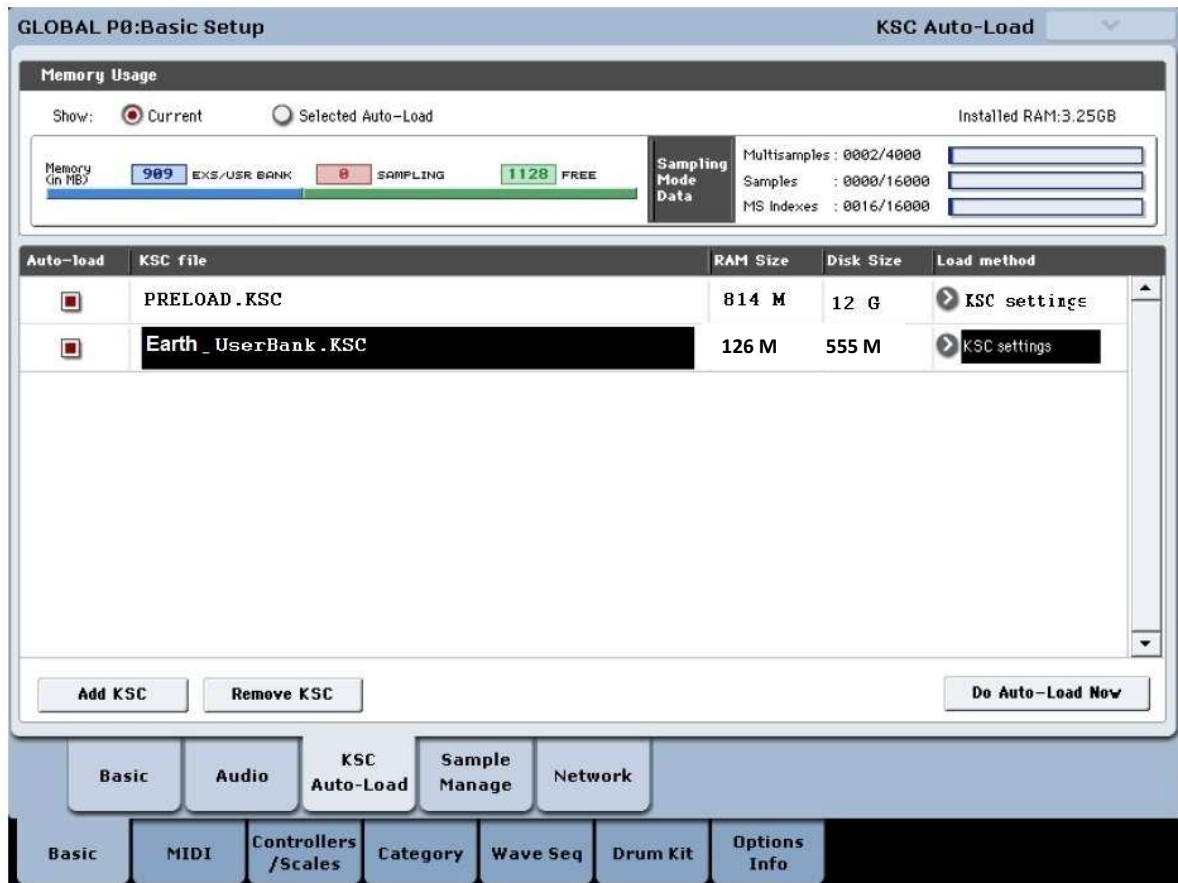
Press red Load button on the bottom right section of dialogue window. You will see a dialogue window as shown on the picture below, press ok.



Important:

There is a possibility to load the Earth samples on Kronos system start-up not to the RAM memory, but to Virtual memory. To do so, when you enter Global mode, highlight the Earth.KSC file and press Remove KSC button to remove the link to the file. Then again press the button Add KSC – but this time find and highlight the file with name Earth_UserBank.KSC in its location on internal hard drive.

The result of such installation should be as shown on the screen below:



When proceeding in such way, the Earth set will not overload the RAM memory and will be instantly collected from internal disc.

In both cases, loading the Protein either to RAM memory or to Virtual memory, after restarting your Kronos – you will be able to start to play your new Earth sound set right from the start of your instrument.

License –

Please read thoroughly the text of License Agreement.

LICENSE GRANT

The package contains sound data ("Software") and related explanatory written materials ("Documentation"). "You" means the person or company who is being licensed to use the Software or Documentation. "We" and "us" means company "SOP"

TITLE

We remain the owner of all right, title and interest in the Software and Documentation.

ARCHIVAL OR BACKUP COPIES

You may either:

- make one copy of the Software solely for backup

THINGS YOU MAY NOT DO

The Software and Documentation are protected by EU copyright laws and international treaties.

You must treat the Software and Documentation like any

Using this software you hereby express your consent to observe the License Agreement and you become a Party of this Agreement.

other copyrighted material.

You may not:

- copy the Documentation, other than for your own use,
- copy the Software except to make archival or backup copies as provided above,
- reverse engineer, disassemble, decompile or make any attempt to discover the source code of the Software,
- place the Software onto a server so that it is accessible via a public network such as the Internet,
- sell, sublicense, rent, lease or lend any portion of the Software or Documentation, or modified versions of the Software and Documentation,
- sell or transfer the rights provided to you hereunder to another person, whether through the use of services such as E-bay or any other means, or
- create derivative works based on the Software.

Samples are the property of Sounds Of Planet. Here by Sounds Of Planet gives a license to use these samples both in non-commercial and commercial purposes under condition that they will not be used as a part of another sample library.